

TEAMSPO



LET'S PLAY

2024

 hummel





CONTENT

INTRO

02 Brand history

04 Sponsorships

COLLECTIONS

06 Lead

14 Authentic

24 Core XK

34 Essential

CATEGORIES

40 Beespoke & Sublimation

44 Travel

50 Move Grid

56 Go 2.0

64 Goalkeeper

70 Socks

74 Bags

78 Accessories

86 Footballs

PRACTICAL INFO

96 Print guide

97 Size chart

98 Index



1923 - 2024
MORE THAN 100 YEARS OF HUMMEL

THIS IS OUR HISTORY

1923



Albert Messmer develops one of the first football cleats in the world. With his brother Michael Ludwig Messmer, he founds the company Messmer & Co., that will go on to become known as hummel.

1956



The visionary Bernhard Weckenbrock takes over the company. He creates a comprehensive brand identity and introduces the chevrons.



1969



The first sportswear collection is launched. Sponsorships are signed and help boost sales. A rounder version of the bumblebee than the current one is created.

1968



The first sponsorship deal is signed. The deal is with Duisburg, a team playing in the 2nd German Bundesliga.

1970

hummel is introduced to the Northern European market.



1979



hummel signs a sponsorship deal with the Danish national team for the first time – a deal that lasts until 2004.

1988



hummel signs a sponsorship deal with Real Madrid and the club's biggest star, Emilio Butragueño. The deal makes hummel products even more popular.





1999

hummel gets a new owner – Thornico. Christian Stadil becomes part of the brand history. He launches a reintroduced, original sport style collection on the fashion market and hummel becomes a trendsetting sports apparel brand.



1992

It's a surprising win, to say the least. The Danish national team takes the title at the European Championships having played Germany in the final.



2020

In 2020 hummel team up with the historic football club Everton FC and return to the Premier League after 13 years of absence. The chevrons are back on the biggest football stage again!



2019

In 2019, hummel substantiates its status as an original handball brand by signing the German handball club, THW Kiel – unarguably one of the biggest clubs in the World.

2016

After many years hummel once again sponsors a team in the German Bundesliga. SC Freiburg plays a sensational first season after returning to the first league and qualifies for international competition.

1923

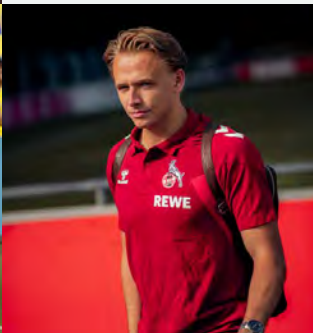
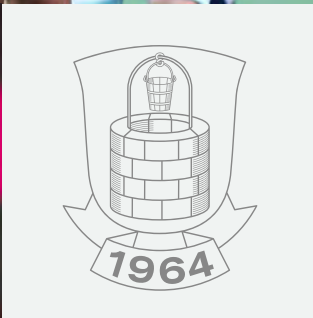
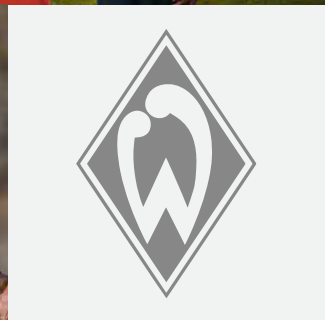
100 YEARS IN SPORT

In 2023, we celebrated a century of hummel – marking 100 years of proud heritage in the world of sports.



1000+ SPONSORSHIPS

#TEAMHUMMEL







LEAD

HIGH FUNCTIONALITY AND MODERN AESTHETICS



_Lightweight materials

_All-weather designs for increased functionality

_High-performance functions and benefits

Collection running from 2021-2024





PROGRAM OVERVIEW

LEAD



POLY JERSEY S/S

KIDS	207394	\$ 44.95
MENS	207393	\$ 44.95
WOMENS	207397	\$ 44.95



HALF ZIP

KIDS	207404	\$ 74.95
MENS	207403	\$ 74.95
WOMENS	207424	\$ 74.95



POLY HOODIE

KIDS	207410	\$ 74.95
MENS	207409	\$ 74.95
WOMENS	211857	\$ 74.95



TRAINING JACKET

KIDS	207416	\$ 75.95
MENS	207415	\$ 75.95



POLY ZIP JACKET

KIDS	207400	\$ 74.95
MENS	207399	\$ 74.95
WOMENS	211854	\$ 74.95



ALL WEATHER JACKET

KIDS	207406	\$ 109.95
MENS	207405	\$ 109.95



POLY SHORTS

KIDS	207396	\$ 34.95
MENS	207395	\$ 34.95
WOMENS	207398	\$ 34.95



POLY PANTS

KIDS	210280	\$ 64.95
MENS	210279	\$ 64.95
WOMENS	211856	\$ 64.95



FOOTBALL PANTS

KIDS	207414	\$ 64.95
MENS	207413	\$ 64.95







HMLLEAD S/S POLY JERSEY

- Main: 100% polyester
- BeeCool
- Regular Fit
- Waterbased print
- Size 104 only available in Black [2001] and Raspberry Sorbet [3576]
- Color Lime Punch [6242] only available for men and kids



KIDS	207394	4Y - 16Y	\$ 44.95
WOMEN	207397	XXS - XL	\$ 44.95
MEN	207393	XS - 2XL	\$ 44.95



Black [2001] / Grey melange [2006] / True red [3062] / Raspberry sorbet [3576] / Orange tiger [5190] / Blazing yellow [5269] / Jelly bean [6235] / Lime punch [6242][only men] / Marine [7026] / True blue [7045] / Dark denim [7642] / White [9001]

HMLLEAD POLY SHORTS

- Main: 100% polyester
- Bee Cool
- Regular fit
- Adjustable waist
- Waterbased print
- Color Lime Punch [6242] only available for men and kids



KIDS	207396	6Y - 16Y	\$ 34.95
WOMEN	207398	XXS - XL	\$ 34.95
MEN	207395	XS - 2XL	\$ 34.95



Black [2001] / True red [3062] / Biking red [3584] / Jelly bean [6235] / Lime punch [6242] / Marine [7026] / True blue [7045] / Dark denim [7642] / White [9001]

HMLLEAD HALF ZIP

- Main: 98% polyester, 2% elastane
- Bee Cool
- Regular fit
- Waterbased print
- Zipper pockets
- Color Grey Melange [2006], Jelly Bean [6235], Lime Punch [6242], Marine [7026] only available for men and kids



KIDS	207404	6Y - 16Y	\$ 74.95
WOMEN	207424	XXS - XL	\$ 74.95
MEN	207403	XS - 2XL	\$ 74.95



Black [2001] / Grey melange [2006][only men] / True red [3062] / Biking red [3584] / Jelly bean [6235] [only men] / Lime punch [6242] [only men] / Marine [7026] [only men] / True blue [7045] / Dark denim [7642]



HMLLEAD POLY ZIP JACKET

- Main: 98% polyester, 2% elastane
- Bee Cool
- Regular fit
- Zipper pocket
- Waterbased print
- Color Jelly Bean [6235], Lime Punch [6242], Marine [7026] only available for men and kids



KIDS	207400	6Y - 16Y	\$ 74.95
WOMEN	211854	XXS - XL	\$ 74.95
MEN	207399	XS - 2XL	\$ 74.95



2001



3062



3584



6235



6242



7026



7045



7642

Black [2001] / Grey melange [2006][only men] / True red [3062] / Biking red [3584] / Jelly bean [6235] [only men] / Lime punch [6242] [only men] / Marine [7026] [only men] / True blue [7045] / Dark denim [7642]

HMLLEAD POLY HOODIE

- Main: 98% polyester, 2% elastane
- Regular fit
- Bee Cool
- Waterbased print
- Zipper pockets
- Color Grey Melange [2006], Marine [7026] and Biking Red [3584] only available for men and kids



KIDS	207410	6Y - 16Y	\$ 74.95
WOMEN	211857	XXS - XL	\$ 74.95
MEN	207409	XS - 2XL	\$ 74.95



2001



2006



3062



3584



7026



7045



7642

Black [2001] / Grey melange [2006][only men] / True red [3062] / Biking red [3584] / Marine [7026] [only men] / True blue [7045] / Dark denim [7642]

HMLLEAD TRAINING JACKET

- Main: 100% polyester
- Waterproof: 3000/3000
- Regular fit
- Fluorine free
- Zipper garage



KIDS	207416	6Y - 16Y	\$ 75.95
MEN	207415	XS - 2XL	\$ 75.95



2001



3062



7026



7642



7045

Black [2001] / True red [3062] / Marine [7026] / Dark denim [7642] / True blue [7045]



HMLLEAD POLY PANTS

- Main: 98% polyester, 2% elastane
- Bee Cool
- Regular fit
- Zipper pocket
- Adjustable waist



KIDS	210280	6Y - 16Y	\$ 64.95
WOMEN	211856	XXS - XL	\$ 64.95
MEN	210279	XS - 2XL	\$ 64.95

Black [2001] / Marine [7026] / Dark denim [7642]



2001



7026



7642

HMLLEAD FOOTBALL PANTS

- Main: 98% polyester, 2% elastane
- Bee Cool
- Adjustable waist
- Zipper pocket
- Tight fit



KIDS	207414	6Y - 16Y	\$ 64.95
MEN	207413	XXS - 2XL	\$ 64.95

Black [2001] / Marine [7026] / Dark denim [7642]



2001



7026



7642





HMLLEAD ALL WEATHER JACKET

- Main: 100% polyester
- Fluorine free
- Waterproof: 3000/3000
- Zipper pocket
- Storm cuff



KIDS	207406	6Y - 16Y	\$ 109.95
MEN	207405	XS - 3XL	\$ 109.95



2001

7642

Black [2001] / Dark denim [7642]



AUTHENTIC

THE CLASSIC HUMMEL HERITAGE DESIGN
COMBINED WITH OPTIMAL PERFORMANCE



- _Focus** on speed and ease of movement
- _Lightweight** performance and good ventilation
- _Weather** protection for comfort

Collection running from 2024-2027





PROGRAM OVERVIEW

AUTHENTIC



POLY JERSEY S/S

KIDS	219965	\$ 36.95
MENS	219964	\$ 36.95
WOMENS	219966	\$ 36.95



CO T-SHIRT S/S

MENS	220007	\$ 39.95
WOMENS	220009	\$ 39.95



FUNCTIONAL POLO

MENS	219991	\$ 49.95
-------------	--------	----------



CO TRAINING SWEAT

MENS	220010	\$ 69.95
-------------	--------	----------



HALF ZIP SWEAT

KIDS	219974	\$ 69.95
MENS	219973	\$ 69.95



POLY HOODIE

KIDS	219977	\$ 74.95
MENS	219976	\$ 74.95



POLY ZIP JACKET

KIDS	219983	\$ 69.95
MENS	219982	\$ 69.95
WOMENS	219984	\$ 69.95



ALL WEATHER JACKET

MENS	220000	\$ 99.95
-------------	--------	----------



BENCH JACKET

MENS	219998	\$ 149.95
-------------	--------	-----------



POLY SHORTS

KIDS	219971	\$ 34.95
MENS	219970	\$ 34.95
WOMENS	219972	\$ 34.95



WOVEN SHORTS

KIDS	219995	\$ 39.95
MENS	219994	\$ 39.95
WOMENS	224785	\$ 39.95



POLY PANTS

KIDS	219989	\$ 64.95
MENS	219988	\$ 64.95
WOMENS	219990	\$ 64.95







HMLAUTHENTIC PL JERSEY S/S

- 100% recycled polyester
- BeeCool
- Chevron tape
- Waterbased print



KIDS	219965	6Y - 14Y	\$ 36.95
WOMEN	219966	XXS - XL	\$ 36.95
MEN	219964	XS - 2XL	\$ 36.95



Asphalt [1525] / Black [2001] / Grey melange [2006] / True red [3062] / Dahlia purple/asphalt [3766] / Blazing yellow [5269] / Jelly bean [6235] / Blue coral/sulphur spring [6834] / Marine [7026] / True blue [7045] / White [9001] / White/true blue [9368] / White/true red [9402] / Sports yellow/true blue [5167]

HMLAUTHENTIC PL SHORTS

- 100% recycled polyester
- BeeCool
- Chevron tape
- Waterbased print



KIDS	219971	6Y - 14Y	\$ 34.95
WOMEN	219972	XXS - XL	\$ 34.95
MEN	219970	XS - 2XL	\$ 34.95



Asphalt [1525] / Black [2001] / True red [3062] / Blazing yellow [5269] / Jelly bean [6235] / Marine [7026] / True blue [7045] / Blue coral [7058] / White [9001]

HMLAUTHENTIC FUNCTIONAL POLO

- 100% recycled polyester
- BeeCool
- Chevron tape
- Waterbased print



MEN	219991	XS - 2XL	\$ 49.95
------------	---------------	-----------------	-----------------



Black [2001] / Grey melange [2006] / True red [3062] / Jelly bean [6235] / True blue [7045] / White [9001]



HMLAUTHENTIC HALF ZIP SWEAT

- 100% recycled polyester
- Bee Cool
- Chevron tape
- Waterbased print



KIDS	219974	6Y - 14Y	\$ 69.95
MEN	219973	2XS - 2XL	\$ 69.95



Grey melange [2006] / Asphalt [1525] / Black [2001] / True red [3062] / Blazing yellow [5269] / Jelly bean [6235] / Marine [7026] / True blue [7045]

HMLAUTHENTIC PL HOODIE

- 100% recycled polyester
- Zipper pocket
- Chevron tape
- Bee Cool



KIDS	219977	6Y - 14Y	\$ 74.95
MEN	219976	XXS - 2XL	\$ 74.95



Asphalt [1525] / Black [2001] / Grey melange [2006] / True red [3062] / Blazing yellow [5269] / Jelly bean [6235] / Marine [7026] / True blue [7045]

HMLAUTHENTIC PL ZIP JACKET

- 100% recycled polyester
- Zipper garage
- Zipper pocket
- Waterbased print



KIDS	219983	6Y - 14Y	\$ 69.95
WOMEN	219984	XXS - XL	\$ 69.95
MEN	219982	XS - 2XL	\$ 69.95



Grey melange [2006] / Asphalt [1525] / Black [2001] / True red [3062] / Blazing yellow [5269] / Jelly bean [6235] / Marine [7026] / True blue [7045]



HMLAUTHENTIC WOVEN SHORTS

- 90% recycled polyester, 10% elastane
- BeeCool
- Chevron tape
- Waterbased print



KIDS	219995	6Y - 14Y	\$ 39.95
WOMEN	224785	XXS - XL	\$ 39.95
MEN	219994	XS - 2XL	\$ 39.95

Black [2001] / Marine [7026]



2001



7026

HMLAUTHENTIC PL PANTS

- 100% recycled polyester
- Chevron tape
- Waterbased print
- Zipper pockets



KIDS	219989	6Y - 14Y	\$ 64.95
WOMEN	219990	XXS - XL	\$ 64.95
MEN	219988	XS - 2XL	\$ 64.95

Black [2001] / Marine [7026]



2001



7026

HMLAUTHENTIC ALL WEATHER JACKET

- 100% recycled polyester
- Water Pressure 3000MM
- Chevron tape
- Waterbased print



MEN	220000	2XS - 2XL	\$ 99.95
------------	---------------	------------------	-----------------

Black [2001]



2001



HMLAUTHENTIC BENCH JACKET

- 100% recycled polyester
- Water Pressure 3000MM
- Pocket inside
- Zipper pockets



MEN 219998 2XS - 2XL \$149.95

Black [2001]



2001





HMLAUTHENTIC CO T-SHIRT S/S

- 100% organic cotton
- Chevron tape
- Waterbased print



WOMEN	220009	XXS - XL	\$ 39.95
MEN	220007	XS - 2XL	\$ 39.95

Black [2001] / True red [3062] / Jelly bean [6235] /
True blue [7045] / White [9001]



2001



3062



6235



7045



9001

HMLAUTHENTIC CO TRAINING SWEAT

- 70% organic cotton, 30% recycled polyester
- Chevron tape
- Waterbased print



MEN	220010	XS - 2XL	\$ 69.95
------------	---------------	-----------------	-----------------

Black [2001] / True red [3062] / Jelly bean [6235] /
True blue [7045]



2001



3062



6235



7045





CORE XK

A STRONG RANGE OF QUALITY BASICS



_Quality basics for both training and matches

_Comfortable fabrics and functional cuts for better performance

_Elevated necklines and detailed sleeve hems

Collection running from 2022-2025





PROGRAM OVERVIEW

CORE XK



CORE POLY T-SHIRT S/S

KIDS	212644	\$ 23.95
MENS	211943	\$ 23.95
WOMENS	211944	\$ 23.95



POLY JERSEY S/S

KIDS	211456	\$ 27.95
MENS	211455	\$ 27.95
WOMENS	211457	\$ 27.95



SUBLIMA JERSEY S/S

KIDS	215003	\$ 43.95
MENS	211459	\$ 43.95



STRIPED JERSEY S/S

KIDS	212642	\$ 36.95
MENS	211458	\$ 36.95



POLY JERSEY L/S

KIDS	211462	\$ 23.95
MENS	211461	\$ 29.95



FUNCTIONAL POLO

MENS	211463	\$ 39.95
WOMENS	211942	\$ 39.95



HALF ZIP POLY SWEAT

KIDS	211480	\$ 59.95
MENS	211479	\$ 59.95
WOMENS	211945	\$ 59.95



POLY ZIP SWEAT

KIDS	212652	\$ 59.95
MENS	211481	\$ 59.95
WOMENS	212653	\$ 59.95



POLY SWEAT HOODIE

KIDS	211483	\$ 64.95
MENS	211482	\$ 64.95
WOMENS	212649	\$ 64.95



SPRAY JACKET

KIDS	211487	\$ 59.95
MENS	211486	\$ 59.95



BENCH JACKET

KIDS	212657	\$ 119.95
MENS	211488	\$ 119.95



POLY SHORTS

KIDS	211467	\$ 19.95
MENS	211466	\$ 19.95
WOMENS	211468	\$ 19.95



POLY COACH SHORTS

KIDS	212647	\$ 34.95
MENS	211469	\$ 34.95



POLY PANTS

KIDS	212655	\$ 54.95
MENS	211475	\$ 54.95
WOMENS	212656	\$ 54.95







HMLCORE XK POLY T-SHIRT S/S

- 100% polyester
- Bee Cool
- Interlock fabric
- Regular fit
- Waterbased print



KIDS	212644	6Y - 16Y	\$ 23.95
WOMEN	211944	XXS - XL	\$ 23.95
MEN	211943	XS - 2XL	\$ 23.95



Black [2001] / Grey melange [2006] / True red [3062] / Cotton candy [3257] /
 Acai/white [3332] / Lime popsicle [5045] / Blazing yellow/true blue [5139] /
 Orange tiger [5190] / Blazing yellow [5269] / Jelly bean [6235] / Marine [7026] /
 True blue [7045] / Blue coral [7058] / Blue danube [8729] / White [9001] /
 White/true blue [9368]



HMLCORE XK POLY JERSEY S/S

- 100% polyester
- Bee Cool
- Interlock fabric
- Regular fit
- Waterbased print
- 4XL only available in Black [2001], True Red [3062],
 Acai [3443], True Blue [7045], Marine [7026],
 White [9001] and White/True Blue [9368]



KIDS	211456	6Y - 16Y	\$ 27.95
WOMEN	211457	XXS - XL	\$ 27.95
MEN	211455	XS - 3XL	\$ 27.95



Black [2001] / Grey melange [2006] / Maroon [3055] / True red [3062] / Cotton candy [3257] /
 Acai/white [3332] / Acai [3443] / Sports yellow [5001] / Lime popsicle [5045] /
 Orange tiger [5190] / Blazing yellow [5269] / Evergreen [6140] / Jelly bean [6235] /
 Marine [7026] / Argentina blue [7035] / True blue [7045] / Blazing yellow/True blue [5139]
 Blue coral [7058] / Blue danube [8729] / White [9001] / White/true blue [9368]





HMLCORE XK POLY JERSEY L/S

- 100% polyester
- Bee Cool
- Interlock fabric
- Regular fit
- Waterbased print



KIDS	212644	6Y - 16Y	\$ 29.95
MEN	211461	XS - 2XL	\$ 29.95



Black [2001] / True red [3062] / Acai [3443] / Lime popsicle [5045] / Orange tiger [5190] / Blazing yellow [5269] / Jelly bean [6235] / Marine [7026] / True blue [7045] / Blue coral [7058] / Blue danube [8729] / White [9001]



HMLCORE XK POLY SHORTS

- 100% polyester
- BeeCool
- Interlock fabric
- Regular fit
- Waterbased print
- 4XL only available in Black [2001], True Red [3062], True Blue [7045], Marine [7026] and White [9001]
- Color Blazing Yellow [5269] and Orange Tiger [5190] only available for men and kids



KIDS	211467	6Y - 16Y	\$ 19.95
WOMEN	211468	XXS - XL	\$ 19.95
MEN	211466	XS - 3XL	\$ 19.95



Black [2001] / Black/lime popsicle [2096] / True red [3062] / Acai [3443] / Orange tiger [5190] / Blazing yellow [5269] / Evergreen [6140] / Jelly bean [6235] / Marine [7026] / True blue [7045] / Blue coral [7058] / True blue/blazing yellow [8606] / White [9001] / White/white [9425] / Sports yellow [5001]



HMLCORE XK POLY COACH SHORTS

- 100% polyester
- BeeCool
- Zipper pocket
- Drawstring at waist
- Regular fit
- Waterbased print



KIDS	212647	6Y - 16Y	\$ 34.95
MEN	211469	XS - 3XL	\$ 34.95



Black [2001] / Marine [7026]



HMLCORE XK FUNCTIONAL POLO

- Main: 100% polyester
- Bee Cool
- Piqué fabric
- Regular fit
- Waterbased print
- 4XL only available in Black [2001], Marine [7026] and White [9001]



WOMEN	211942	XXS - XL	\$ 39.95
MEN	211463	XS - 3XL	\$ 39.95



Black [2001] / True red [3062] / Marine [7026] / True blue [7045] / White [9001]

HMLCORE XK HALF ZIP POLY SWEAT

- 98% polyester, 2% elastane
- BeeCool
- Pique fabric
- Regular fit
- Waterbased print
- Sports Yellow [5001] and Evergreen [6140] only available for men and kids



KIDS	211480	6Y - 16Y	\$ 59.95
WOMEN	211945	XXS - XL	\$ 59.95
MEN	211479	XS - 2XL	\$ 59.95



Grey melange [2006] / Black [2001] / True red [3062] / Cotton candy [3257] / Acai/white [3332] / Acai [3443] / Sports yellow [5001] / Lime popsicle [5045] / Orange tiger [5190] / Evergreen [6140] / Jelly bean [6235] / Marine [7026] / True blue [7045] / Blue coral [7058] / Blue danube [8729]

HMLCORE XK POLY ZIP SWEAT

- 98% polyester, 2% elastane
- Bee Cool
- Waterbased print
- Regular fit
- Zipper pocket



KIDS	212652	6Y - 16Y	\$ 59.95
WOMEN	212653	XXS - XL	\$ 59.95
MEN	211481	XS - 3XL	\$ 59.95



Black [2001] / Grey melange [2006] / True red [3062] / Acai/white [3332] / Orange tiger [5190] / Evergreen [6140] / Jelly bean [6235] / Marine [7026] / True blue [7045] / Sports yellow [5001]



HMLCORE XK POLY SWEAT HOODIE

- 98% polyester, 2% elastane
- BeeCool
- Regular fit
- Waterbased print



KIDS	211483	6Y - 16Y	\$ 64.95
WOMEN	212649	XXS - XL	\$ 64.95
MEN	211482	XS - 2XL	\$ 64.95



2001



2006



3062



3257



3332



3443



5045



7026



7045



7058



8729

Black [2001] / Grey melange [2006] / True red [3062] / Cotton candy [3257] /
Acacia [3332] / Acacia [3443] / Lime popsicle [5045] / Marine [7026] /
True blue [7045] / Blue coral [7058] / Blue danube [8729]





HMLCORE XK POLY PANT

- 98% polyester, 2% elastane
- Bee Cool
- Waterbased print
- Regular fit
- Zipper pocket
- 4XL only available in Black [2001] and Marine [7026]



KIDS	212655	6Y - 16Y	\$ 54.95
WOMEN	212656	XXS - XL	\$ 54.95
MEN	211475	XS - 3XL	\$ 54.95



2001



3443



7026



7058

Black [2001] / Acai [3443] / Marine [7026] / Blue coral [7058]

HMLCORE XK SPRAY JACKET

- Main: 100% polyester
- Fluorine free
- Water repellent
- 4XL only available in Black [2001]
- Zipper pockets



KIDS	211487	6Y - 16Y	\$ 59.95
MEN	211486	XS - 3XL	\$ 59.95



2001



3062



5045



6235



7026



7045

Black [2001] / True red [3062] / Lime popsicle [5045] / Jelly bean [6235] / Marine [7026] / True blue [7045]

HMLCORE XK BENCH JACKET

- Main: 100% polyester
- Water repellent
- Storm cuff
- Zipper pocket
- Padding for extra warmth
- 4XL only available in Black [2001] and Marine [7026]



KIDS	212657	6Y - 16Y	\$ 119.95
MEN	211488	XS - 3XL	\$ 119.95



2001



7026



7058

Black [2001] / Marine [7026] / Blue coral [7058]



HMLCORE XK STRIPED JERSEY S/S

- 100% polyester
- Bee Cool
- Interlock fabric
- Regular fit
- Waterbased print



KIDS	212642	6Y - 16Y	\$ 36.95
MEN	211458	XS - 2XL	\$ 36.95

Black/true red [2030] / Black/white [2114] / Cotton candy/acai [3266] / True red/white [3946] / Lime popsicle/black [5047] / Black/blazing yellow [5138] / Jelly bean/white [6129] / Blue coral/blue danube [7096] / True blue/true red [7358] / True blue/white [7691] / Marine/white [7929] / White/black [9124]



2030



2114



3266



3946



5047



5138



6129



7096



7358



7691



7929



9124

HMLCORE XK SUBLIMATION JERSEY S/S

- 100% polyester
- Bee Cool
- Piping
- Regular fit
- Waterbased print



KIDS	215003	6Y - 16Y	\$ 43.95
MEN	211459	XS - 2XL	\$ 43.95

Black [2001] / True red [3062] / Marine [7026] / True blue [7045] / White [9001]



2001



3062



7026



7045



9001



ESSENTIAL

THE MUST-HAVES



- _Essentials for both **training and matches**
- _Lightweight materials and **sportive cuts** for great performance
- _ **Elevated fits** and detailed sleeve hems

Collection running from 2024-2026





PROGRAM OVERVIEW

ESSENTIAL



JERSEY S/S

KIDS	224542	\$19.95
MENS	224541	\$19.95
WOMENS	227349	\$19.95



SWEATSHIRT

KIDS	224640	\$44.95
MENS	224639	\$44.95



TRACK JACKET

KIDS	224548	\$54.95
MENS	224547	\$54.95



SHORTS BENCH JKT

KIDS	224555	\$99.95
MENS	224554	\$99.95



SHORTS

KIDS	224544	\$17.95
MENS	224543	\$17.95
WOMENS	227350	\$17.95



TRAINING PANTS

KIDS	224550	\$49.95
MENS	224549	\$49.95







HM ESSENTIAL JERSEY S/S

- 100% recycled polyester
- Recycled fabric
- Waterbased print
- Regular fit



KIDS	224542	4Y - 14Y	\$ 19.95
WOMEN	227349	XXS - XL	\$ 19.95
MEN	224541	XS - 2XL	\$ 19.95



Black [2001] / Steel gray [2350] / True red [3062] / Blazing yellow [5269] / Jelly bean [6235] / Marine [7026] / True blue [7045] / White [9001]

HM ESSENTIAL SHORTS

- 100% recycled polyester
- Recycled fabric
- Waterbased print
- Regular fit



KIDS	224544	4Y - 14Y	\$ 17.95
WOMEN	227350	XXS - XL	\$ 17.95
MEN	224543	XS - 2XL	\$ 17.95



Black [2001] / True red [3062] / Marine [7026] / True blue [7045] / White [9001]

HM ESSENTIAL SWEATSHIRT

- 100% recycled polyester
- Recycled fabric
- Waterbased print
- Regular fit



KIDS	224640	4Y - 14Y	\$ 44.95
MEN	224639	XS - 2XL	\$ 44.95



Black [2001] / True red [3062] / Blazing yellow [5269] / Jelly bean [6235] / Marine [7026] / True blue [7045]



HMESSENTIAL TRAINING PANTS

- 100% recycled polyester
- Waterbased print
- Tapered fit
- Side pockets



KIDS	224550	4Y - 14Y	\$ 49.95
MEN	224549	XS - 2XL	\$ 49.95

Black [2001] / Marine [7026]

HMESSENTIAL TRACK JACKET

- 100% recycled polyester
- Waterbased print
- Regular fit
- Side pockets



KIDS	224548	4Y - 14Y	\$ 54.95
MEN	224547	XS - 2XL	\$ 54.95

Black [2001] / True red [3062] / Blazing yellow [5269] / Jelly bean [6235] / Marine [7026] / True blue [7045]

HMESSENTIAL SHORT BENCH JKT

- 100% recycled polyester
- Water repellent
- Zipper pocket
- Zipper garage
- Regular fit



KIDS	224555	6Y - 14Y	\$ 99.95
MEN	224554	XS - 2XL	\$ 99.95

Black [2001] / Marine [7026]

SUBLIMATION

DESIGN YOUR OWN KIT

JERSEY AND SHORTS - DESIGNED WITH SUBLIMATION

With the hummel Sublimation programme, clubs can have unique kits and create their own vision of style. Clubs can choose from five jersey styles with either short or long sleeves, and a variety of special colours and designs. Furthermore, it is possible to add your own design through our sublimation programme.

With endless design possibilities, design variations and flexibility on quantity and lead time, hummel Sublimation highlight the individuality of every single club and caters to speciality needs and requirements.

It's time to go explore the extensive possibilities of the hummel Sublimation universe.





CUSTOM JERSEYS AND SHORTS

AFFORDABLE, FAST, FLEXIBLE

Go to www.designhummel.com

Customized Stock Search X

Custom Shorts... Custom Longsle... Mortensen

Designs Available

ABSTRACT-STRIPE S	CAMO-CLASSIC	CENTER-CRISS-CROSS-STRIPE	CENTER-DOUBLE-LINE
COLOR-HALFTONE	CRISS-CROSS	DESERT	DIAGONAL-RIBBON
DIAGONAL-STRIPE S	DOTS-FADING	FADING-HOOPS	GRADIENT



ALL STYLES ARE AVAILABLE IN MEN'S, WOMEN'S AND YOUTH SIZE





TRAVEL

LEISURE STYLES



_Comfort and stylish travel styles
_Off-the-pitch wear
_Elevated fabrics and modern details

Collection running 2024





PROGRAM OVERVIEW

TRAVEL



T-SHIRTS/S

MENS 220291 \$34.95
WOMENS 220293 \$34.95



POLO

MENS 220438 \$49.95
WOMENS 220440 \$49.95



SWEAT HOODIE

MENS 220294 \$89.95
WOMENS 220296 \$89.95



SHORTS

MENS 220309 \$49.95
WOMENS 220311 \$49.95







HMLTRAVEL T-SHIRT S/S

- 100% cotton
- Natural fibre
- Regular fit
- Jersey fabric



2001



2010



6599



7026

WOMEN	220293	XXS - XL	\$ 34.95
MEN	220291	XS - 2XL	\$ 34.95

Black [2001] / Light grey melange [2010] /
Military olive [6599] / Marine [7026]

HMLTRAVEL POLO

- 60% cotton, 40% polyester
- Waterbased print
- Regular fit
- Piqué fabric



2001



2010



7026

WOMEN	220440	XXS - XL	\$ 49.95
MEN	220438	XS - 2XL	\$ 49.95

Black [2001] / Light grey melange [2010] / Marine [7026]

HMLTRAVEL SHORTS

- 65% cotton, 35% polyester
- Zipper pocket
- Elastic waistband
- Regular fit
- Sweat fabric



2001



7026

WOMEN	220311	XXS - XL	\$ 49.95
MEN	220309	XS - 2XL	\$ 49.95

Black [2001] / Marine [7026]



HMLTRAVEL SWEAT HOODIE

- 65% cotton, 35% polyester
- Side pockets
- Waterbased print
- Sweat fabric
- Regular fit



2001



2010



6599



7026

WOMEN	220296	XXS - XL	\$ 89.95
MEN	220294	XS - 2XL	\$ 89.95

Black [2001] / Light grey melange [2010] / Military olive [6599] / Marine [7026]





MOVE GRID

HERITAGE LEISURE STYLES FOR EVERY PURPOSE



_Heritage design styles for off the pitch
_Special fabric selection for best-in-class comfort
_Elevated cuts and fits

Collection running from 2023-2025





PROGRAM OVERVIEW

MOVE GRID



COTTON T-SHIRT S/S

KIDS	214914	\$29.95
MENS	214792	\$29.95
WOMENS	214793	\$29.95



COTTON HOODIE

KIDS	214909	\$64.95
MENS	214783	\$64.95
WOMENS	214787	\$64.95







HMLMOVE GRID COTTON T-SHIRT S/S

- 100% cotton
- Regular fit
- Jersey fabric
- Embroidered logo



2001



2006



3506



7026

KIDS	214914	8Y - 16Y	\$ 29.95
WOMEN	214793	XXS - XL	\$ 29.95
MEN	214792	XS - 2XL	\$ 29.95

Black [2001] / Grey melange [2006] / Grape wine [3506] /
Marine [7026]

HMLMOVE GRID COTTON HOODIE

- 75% cotton, 25% polyester
- Regular fit
- Sweat fabric
- Waterbased print
- Embroidered logo



2001



2006



7026

KIDS	214909	8Y - 16Y	\$ 64.95
WOMEN	214787	XXS - XL	\$ 64.95
MEN	214783	XS - 2XL	\$ 64.95

Black [2001] / Grey melange [2006] / Marine [7026]





GO 2.0

CLASSIC COTTON SPORTSWEAR



_Classic cotton styles for every purpose
_Regular fit and elevated cotton for high comfort
_Organic cotton and recycled polyester

Collection running from 2024-2028





PROGRAM OVERVIEW

GO 2.0



T-SHIRT S/S

KIDS	224829	\$19.95
MENS	224828	\$19.95
WOMENS	224830	\$19.95



POLO

MENS	224831	\$39.95
WOMENS	224832	\$39.95



SWEATSHIRT

KIDS	224836	\$59.95
MENS	224835	\$59.95



HOODIE

KIDS	224834	\$64.95
MENS	224833	\$64.95
WOMENS	225250	\$64.95



ZIP HOODIE

KIDS	224838	\$69.95
MENS	224837	\$69.95
WOMENS	224839	\$69.95



FLEECE JACKET

MENS	221008	\$89.95
WOMENS	221010	\$89.95



QUILTED HOOD JACKET

KIDS	221002	\$119.95
MENS	221001	\$119.95
WOMENS	221003	\$119.95



PARKA JACKET

MENS	221017	\$149.95
-------------	--------	----------







HMLGO 2.0 T-SHIRT S/S

- 100% organic cotton
- Natural fibre
- Embroidered logo
- Jersey fabric



KIDS	224829	6Y - 14Y	\$ 19.95
WOMEN	224830	XXS - XL	\$ 19.95
MEN	224828	XS - 2XL	\$ 19.95



Black [2001] / Grey melange [2006] / True red [3062] / Blazing yellow [5269] / Evergreen [6140] / Jelly bean [6235] / Marine [7026] / True blue [7045] / White [9001]

HMLGO 2.0 POLO

- 100% organic cotton
- Natural fibre
- Embroidered logo
- Pique fabric



WOMEN	224832	XXS - XL	\$ 39.95
MEN	224831	XS - 2XL	\$ 39.95



Black [2001] / Grey melange [2006] / True red [3062] / Blazing yellow [5269] / Jelly bean [6235] / Marine [7026] / True blue [7045] / White [9001]





HMLGO 2.0 SWEATSHIRT

- 80% organic cotton, 20% recycled polyester
- Regular fit
- Sweat fabric
- Embroidered logo



KIDS	224836	6Y - 14Y	\$ 59.95
MEN	224835	XXS - 2XL	\$ 59.95



Black [2001] / Grey melange [2006] / True red [3062] / Blazing yellow [5269] / Jelly bean [6235] / Marine [7026] / True blue [7045]

HMLGO 2.0 HOODIE

- 80% organic cotton, 20% recycled polyester
- Regular fit
- Sweat fabric
- Embroidered logo



KIDS	224834	6Y - 14Y	\$ 64.95
WOMEN	225250	XXS - XL	\$ 64.95
MEN	224833	XS - 2XL	\$ 64.95



Black [2001] / Grey melange [2006] / True red [3062] / Blazing yellow [5269] / Jelly bean [6235] / Marine [7026] / True blue [7045]

HMLGO 2.0 ZIP HOODIE

- 80% organic cotton, 20% recycled polyester
- Embroidered logo
- Side pockets
- Sweat fabric



KIDS	224838	6Y - 14Y	\$ 69.95
WOMEN	224839	XXS - XL	\$ 69.95
MEN	224837	XS - 2XL	\$ 69.95



Grey melange [2006] / Black [2001] / True red [3062] / Blazing yellow [5269] / Evergreen [6140] / Jelly bean [6235] / Marine [7026] / True blue [7045]



HMLGO FLEECE JACKET

- 100% polyester
- Regular fit
- Warm fleece material
- Waterbased print
- Zipper pockets



WOMEN	221010	XXS - XL	\$ 89.95
MEN	221008	XS - 2XL	\$ 89.95

Black [2001]



2001

HMLGO QUILTED HOOD JACKET

- 100% polyester
- Regular Fit
- Fluorine free finish
- Waterbased print
- Inside Pockets
- Zipper pockets



KIDS	221002	6Y - 16Y	\$ 119.95
WOMEN	221003	XXS - XL	\$ 119.95
MEN	221001	XS - 2XL	\$ 119.95

Black [2001] / Marine [7026]



2001



7026

HMLGO PARKA JACKET

- 100% polyester
- Regular Fit
- Fluorine free finish
- Waterbased print
- Inside Pockets
- Zipper pockets



MEN	221017	XS - 2XL	\$ 149.95
------------	---------------	-----------------	------------------

Black [2001] / Marine [7026]



2001



7026





GOALKEEPER

ICONIS DESIGN REFERENCES



_Padded elbows and thighs for protective support

_Functional fits and range of movement for performance

_Iconic design references and seasonal colours





ESSENTIAL GK JERSEY

- 100% polyester
- Regular fit
- Rib Cuff
- Waterbased print
- Padded elbow protection

KIDS	104087	6Y - 8Y, 10Y - 12Y, 14Y - 16Y	\$ 59.95
MEN	004087	XS - XL	\$ 59.95

Maroon [3055] / Tangerine [5006] /
Evening primrose [6102] / Scuba blue [7905]



3055

5006



6102

7905

CORE GK SET

- 100% polyester
- Regular fit
- Jersey fabric
- Elastic waistband
- Waterbased print

KIDS	205281	6Y - 16Y	\$ 59.95
MEN	205280	XS - 2XL	\$ 59.95

Tangerine [5006] / Evening primrose [6102] /
Evergreen [6140] / Scuba blue [7905]



5006

6102



6140

7905





HMLGK GLOVES CORE GRIP

- 40% latex, 30% Ethylin-vinylacetat, 30% polyester
- Regular cut
- Unisex



9210

224975 4 - 11 \$ 24.95

White/red/black [9210]

HMLGK GLOVES ALLROUND GRIP

- 70% latex, 30% Polyester
- Negative cut
- Unisex
- Latex



9031

224976 7 - 11 \$ 49.95

White/black/red [9031]

HMLGK GLOVES SUPER GRIP

- 55% Latex, 26% Polyester, 18% Cotton, 1% Polyamide
- Negative cut
- Adjustability
- Latex



9124

224977 8 - 11 \$ 69.95

White/black [9124]



HMLGK GLOVES MEGA GRIP

- 51% latex, 28% polyester, 11% cotton, 10% polyamide
- Negative cut
- Elastic wristband
- Latex



2114

225307 8 - 11

\$ 89.95

Black/white [2114]

HMLGK GLOVES HYPER GRIP

- 47% latex, 35% Neoprene polychloroprene, 10% cotton, 8% polyamide
- 360° grip
- Adjustability
- Tight fit
- Negative cut
- Elastic wristband



2287

224978 8 - 11

\$ 119.95

Black/white/red [2287]





SOCKS

HIGH-CLASS SOCK PROGRAM FOR GREAT PERFORMANCE



- _All** colours and styles for every team and purpose
- _High** function details for comfort and performance
- _Small** design details to fit every outfit





ELEMENT FOOTBALL SOCK

- 70% polypropylene, 21% polyamide, 7% cotton, 2% elastane
- Moisture management
- Arch Support
- Regular fit
- Airflow

204046 XS - 2XL \$12.95

Black/white [2114] / Asphalt/black [2736] / Cotton candy [3257] / Acai [3443] /
 Biking red/raspberry sorbet [3583] / Chili pepper/fire red [3785] / True red/white [3946] /
 Tangerine [5006] / Lime popsicle [5045] / Sports yellow/black [5115] / Blazing yellow/True blue [5139] /
 Sports yellow/true blue [5168] / Orange tiger [5190] / Blazing yellow [5269] / Evening primrose [6102] /
 Evergreen/white [6131] / Jelly bean [6235] / Green gecko [6595] / Dark denim/lime punch [6616] /
 Blue coral [7058] / Argentina blue/white [7473] / True blue/white [7691] / True blue/sports yellow [7724] /
 Scuba blue [7905] / Marine/white [7929] / Blue danube [8729] / White/evergreen [9004] /
 White/black [9124] / White/true blue [9368] / White/true red [9402]



ELEMENT FOOTBALL SOCK FOOTLESS

- 62% polypropylene, 36% polyamide, 2% elastane
- Moisture management
- Stretchable fabric
- Regular fit
- Airflow

203404 1 [Junior], 2 [Senior] \$13.95

Black/white [2114] / True red/white [3946] /
 Sports yellow/true blue [5168] / Evergreen/white [6131] /
 True blue/white [7691] / True blue/sports yellow [7724] / White/black [9124]







BAGS

TO MEET ALL NEEDS OF PLAYERS AND TEAMS



_Wide range of assortment for all teams

_Smart details and modern colours

_Different styles to cover all purposes





CORE TEAM BAG

- Main: 100% polyester
- Adjustable shoulder strap
- Padded handle gathering
- Piping



2001

207141 ONE SIZE 118L [80X42X35] \$ 75.95

Black [2001]

CORE BALL BACK PACK

- 100% polyester
- 13 inch laptop sleeve
- Expandable pocket
- Mesh net for ball storage
- Woven fabric
- Padded backside/straps



2001



3081



7079



7464

205888 ONE SIZE 31L [48X34X19] \$ 59.95

Black [2001] / True red/black [3081] / True blue/black [7079] / Marine/black [7464]

TEAM TROLLEY

- 100% polyester
- Storage for full team
- Two wheel trolley
- Padded handle gathering
- Woven fabric



2001

202613 L 134L [82x39x42] \$ 249.95

Black [2001]





ACCESSORIES

ACCESSORIES FOR ALL NEEDS AND PURPOSES



_Advanced materials and technologies

_Wide accessories range to cover all club and teamplayer needs

_Different styles to cover all purposes





HMLSHIN GUARDS HARD SHELL

- 40% Polyester, 30% Ethylen-vinylacetat, 25% Polypropylene, 5% Elastane
- Hard shell
- Ankle protection
- Easy mountingstrap
- Follows European size guide

224971 XS - L \$ 19.95

Pompeian red [4120]



4120

HMLSHIN GUARDS FLEX SHELL

- 45% Ethylen-vinylacetat, 30% Polypropylene, 20% Polyester, 5% Elastane
- Flexible shell
- Ankle protection
- High density foam
- Follows European size guide

224972 XXS - L \$ 24.95

Pompeian red [4120]



4120

HMLSHIN GUARDS SUPER LIGHT

- 45% Polypropylene, 45% Ethylen-vinylacetat, 5% Polyester, 5% Elastane
- Hard shell
- High density foam
- Easy mounting sleeves
- Follows European size guide

224973 XS - L \$ 16.95

Pompeian red [4120]



4120



HMLSHIN GUARDS HYPER FIT

- 50% Thermo plastic polyurethane,
50% Ethylen-vinylacetat
- Flexible shell
- High density foam
- Easy mounting sleeves
- Follows European size guide



3678

224974 XS - L \$ 39.95

Poppy red/transparent [3678]





HUMMEL TRAINING HAT

- 100% acrylic
- Unisex
- Regular fit
- Logo Label

208914 **ONESIZE** \$ 23.95

Black [2001]



2001

HMLLEO CAP

- 100% Cotton
- Adjustable strap
- Metal buckle

215066 **ONESIZE** \$ 29.95

Black [2001] / Thyme [6173] / Pumice Stone [1116] / Blackened Pearl [2033]



2001



61737



1116



2033

3-PACK HEADBAND 17-18

- 41% latex, 41% nylon, 18% polyester
- Elastic headbands with hummel chevrons

098153 **ONESIZE** \$ 24.95



9475



FUNDAMENTAL TRAINING BIB

- 100 % polyester
- Mesh bib with contrasting seam binding
- Contrasting hummel print on center front
- Lightweight fabric
- Regular fit
- Ventilation



105002	MINI	8	\$ 8.95
005002	JUNIOR	S	\$ 8.95
005002	SENIOR	XL	\$ 8.95

True red [3062] / Neon yellow [5009] / Neon orange [5179] / Neon green [6057] / Neon blue [7649] / White [9001]



3062



5009



5179



6057



7649



9001

OLD SCHOOL CAPTAINS BAND

- 94% polyester, 6% rubber
- Single color armband
- Printed logo

099164	ONESIZE	\$ 11.95
--------	---------	----------

Flourecent green/black [5067] / Marine/silver [7268]



5067



7268

FOOTBALLS

FOOTBALLS WITH NEW TECHNOLOGIES



_Elevated football range with new developments

_Colourful designs and details for a modern look

_Different technologies to cover all needs





HMLPRECISION MATCH

- Hybrid technology
- Winded bladder
- High-Performance shell (PU)
- FIFA Quality



9152

Size 5

224987

\$ 79.95

White/black/gold [9152]

HMLPRECISION TRAINING PRO

- Hybrid technology
- FIFA Basic
- Winded bladder
- High-Performance shell (PU)



9023

Size 4



9300

Size 5



5125

Size 5

224985 4 - 5

\$ 49.95

Flou yellow/green/orange [5125] / White/black/yellow [9023] /
White/blue/dark blue [9300]

HMLPRECISION TRAINING

- Winded bladder
- Performance upper (TPU)
- Machine stitched



9253

Size 3



9301

Size 4



9128

Size 5

224983 4 - 5

\$ 29.95

White/blue/yellow [9128] / White/blue/red [9253] /
White/blue/green [9301]



HMLPRECISION FUTSAL

- FIFA basic
- Winded bladder
- Machine stitched



9305

Size 3



9241

Size 4

224989 3 - 4

\$ 44.95

White/red/blue [9241] / White/pink/turquoise [9305]

HMLAEROFly MATCH

- Bonding technology
- Wrapped bladder
- High-Performance shell [PU]



9304

Size 5

224988 5

\$ 129.95

White/gold/black [9304]

HMLAEROFly TRAINING PRO

- Bonding technology
- Winded bladder
- High-Performance shell [PU]



9302

Size 5

224986 5

\$ 54.95

White/blue/silver [9302]



HMLAEROFLY TRAINING

- Hybrid technology
- Winded bladder
- High-Performance shell (PU)

224984 4 - 5 \$ 34.95

White/blue/yellow [9128] / White/blue/green [9301]



9301

4



9128

5

HMLPRECISION MINI

- Circumference 47 cm

224990 MINI \$ 14.95

White/blue/yellow [9128] / White/dark green/yellow [9303]



9128

MINI



9303

MINI

HMLESSENTIAL BALL NET

- 100% Polyester
- Drawstring closure
- Fits 10-12 balls

225573 ONESIZE \$ 14.95

Black [2001]



2001



HMLCORE BALL BAG

- 100% RECYCLED POLYESTER
- Drawstring closure
- Adjustable shoulder strap
- Fits 10-12 balls

225572 ONESIZE \$ 39.95

Black [2001]



2001





THERMO BONDED

INNER CARCASS BLADDER

The restricted carcass bladder does not allow the ball to increase its size. It ensures the stability of the outer cover material and makes the ball last longer.

POLYESTER LINING

The polyester lining strengthens the bond between the bladder and the foam layer in order to improve shape retention for a longer life.



HIGH PERFORMANCE FOAM LAYERING

The foam layer creates a soft touch feel and greater bounce along with high reactive speed off the foot. the ball perfectly round.

PERFECTLY ROUND PU SURFACE

The Thermo Bonded footballs are made with no thread and no stitching. It's made with Heat Infused Technology (HIT), that increases the shape conformity and makes the ball perfectly round.

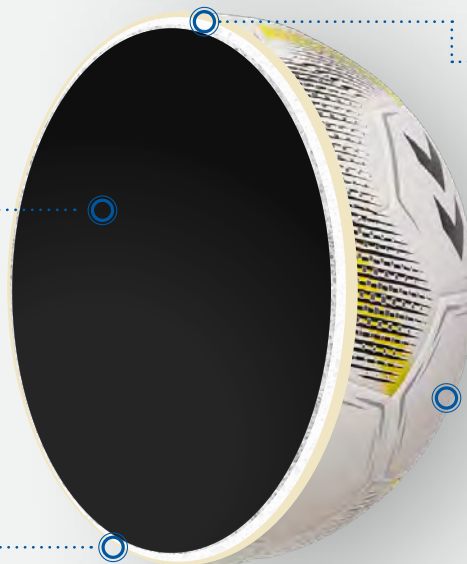
HYBRID & KINETIC

WEIGHT STABILIZING BLADDER

The fiber winded SR bladder is used to achieve correct weight and strong foundation for the outer cover material.

POLYESTER LINING

The inner lining prevents the foam from cracking and tearing.



EXTRA SOFT FOAM LAYERING

The extra thick foam layer in the Hybrid / Kinetic balls ensures greater durability and life along with reduced impact and a soft feeling on the foot.

RESISTANT PU SURFACE

Still being machine stitched, the Hybrid/Kinetic balls are sealed by heat pressure making the balls last longer and keep them perfectly round.

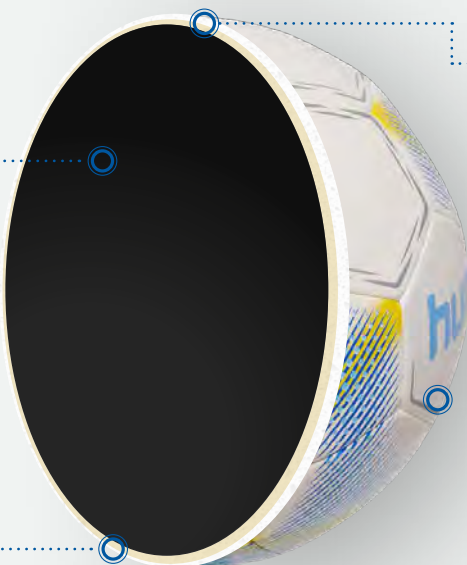
MACHINE + HAND STITCHED

INNER BLADDER

Inner rubber bladder giving vivacity and bounce to the ball and securing minimum expansion over time.

POLYESTER LINING

Machine Stitched : It controls damage to the foam and helps close seams efficiently.
Hand stitched: 3 - 4 layers of polyester are used as a replacement for foam an improves shape retention and rebound.



LIMITED LAYER OF FOAM

With a very limited foam layer the regular balls are slightly harder than others. Hand stitched balls with no foam at all.

STITCHED PU SURFACE

Regular footballs are either machine stitched or hand stitched meaning the seams are not sealed. Still with only 10% water uptake.



FOOTBALL INFLATION GUIDE

PREPARATION

During wintertime we suggest to store the footballs at room temperature [20 – 25°C] for minimum 24 hours before the first inflation in order to secure optimal softness and shape.

Unfold the football with both hands and shake the bladder free.

VALVE OIL

Drip 1 – 2 drops of hummel valve oil into the valve. It is important that valve-oil is used at every inflation as it makes the valve seal properly.

INFLATE

Position the valve upwards and insert the inflation needle straight into the valve.

Always use a long pump needle to ensure the needle does not damage the valve or the bladder.

CHECK PRESSURE

— Inflate the ball to the recommended pressure.

— Recommended pressure is printed on the ball near the valve.

— Inflate slowly to allow the ball to gain its correct shape. Rapid inflation can damage the bladder.

— Use a pressure gauge to check the pressure of the ball.

FOOTBALL MAINTENANCE GUIDE

BEFORE EACH INFLATION

Always drip 1 – 2 drops of hummel valve oil into the valve before inflation to ensure that it seals properly.

STORAGE

Store the ball at reduced pressure in a dry ventilated room at 20 – 25°C.

CLEANING AND DRYING

After use clean the football in mild soapy water and rinse with water. Then wipe the ball off with a towel and let it fully dry in a dry, airy place at 20 – 25°C.

Never dry the ball on or near a heating device.



WEIGHT AND CIRCUMFERENCE OF FOOTBALLS

FOOTBALL	SIZE	CIRCUMFERENCE	WEIGHT	RECOMMENDED PRESSURE [BAR]
HMLAEROFLY MATCH	5	68,5 – 69,5 CM	425 – 435G	0,8 – 1,0
HMLPRECISION MATCH	5	68 – 69 CM	420 – 435G	0,6 - 0,8
HMLAEROFLY TRAINING PRO	5	68 – 69 CM	425 – 435G	0,6
HMLPRECISION TRAINING PRO	5	68 – 69 CM	425 – 435G	0,6
	4	64 – 65 CM	355 – 365G	0,6
HMLAEROFLY TRAINING	5	68 – 69 CM	425-435	0,6
	4	64 – 65 CM	355-365	0,6
HMLPRECISION TRAINING	5	68 – 69 CM	425-435	0,6
	4	64 – 65 CM	355-365	0,6
	3	61 – 62 CM	320-330	0,6
HMLAEROFLY LIGHT 350	5	68,5 – 69,5 CM	425 – 435G	0,6-0-8
	4	64-65 CM	345-355 G	0,6-0,8



FOOTBALL	SIZE	CIRCUMFERENCE	WEIGHT	RECOMMENDED PRESSURE [BAR]
HMLPRECISION CLASSIC	5	68 – 69 CM	425 – 435G	0,8
HMLAEROFLY LIGHT 290	5	68 – 69 CM	290-310G	0,6
	4	64 – 65 CM	285-305G	0,6
	3	61 – 62 CM	280-300G	0,6
HMLPRECISION LIGHT 350	5	68 – 69 CM	345-355G	0,6
	4	64 – 65 CM	320 – 330G	0,6
HMLPRECISION LIGHT 290	5	68 – 69 CM	290-310G	0,6
	4	64 – 65 CM	285-305G	0,6
	3	61 – 62 CM	280-300G	0,6
HMLPRECISION FUTSAL	4	62 – 63 CM	415 – 425G	0,6
	3	58 – 59 CM	380 – 400G	0,6
HMLPRECISION MINI	MINI	46-47 CM	155-165G	0,2-0,3

PRINT GUIDE



- DO** take extra care with the print press
- DO** adjust the machine settings to the correct pressure per cm² and printing time
- DO** have the correct temperature settings as supplied in manual [max temperature 140°C]
- DO** use rubber pad for the garment's print area to lay on



- DO NOT** heat directly onto any existing print on the garment
- DO NOT** use either paper or Teflon sheet to protect existing print from the heat plate
- DO NOT** heat garment for any longer than 15 seconds



IMPORTANT! Providing that these guidelines are followed correctly, you should have a perfectly printed garment with no damage done to the existing print.

hummel is not liable for any damage made to the existing print/logo, should it be reheated and/or if the instructions are not followed correctly. This can damage existing print or logo leading to peeling-off or cracking.





SIZE GUIDE

TEXTILE CHILDREN

EU year/cm	4/104	5/110	6/116	7/122	8/128	9/134	10/140	11/146	12/152	13/158	14/164	15/170	16/176
US year	YXS/4Y		YS/6Y		8Y		YM/10Y		12Y		YL/14Y		16Y
ASIA cm	104	110	116	122	128	134	140	146	152	158	164	170	176

TEXTILE ADULTS

EU	XS	S	M	L	XL	XXL	XXXL	XXXXL
US	XXS	XS	S	M	L	XL	XXL	XXXL
ASIA	S	M	L	XO	XXO	XXXO	XXXXO	XXXXXO

FOOTWEAR CHILDREN

UK	3	4	4 ½	5	6	7	8	8 ½	9	10	11	11 ½	12	13	1	2	2 ½
US	4	5	5 ½	6	7	8	9	9 ½	10	11	12	12 ½	13	1	2	2 ½	3 ½
EU	19	20	21	22	23	24	25	26	27	28	29	30	31	32	33	34	35
JAPAN	10	11	11 ½	12	13	14	15	16	16 ½	17	17 ½	18	19	20	21	21 ½	22

FOOTWEAR ADULT

UK	5	5 ½	6	6 ½	7	7 ½	8	8 ½	9	9 ½	10	10 ½	11	11 ½	12	12 ½	13	13 ½	14	14 ½	15
USM	6	6 ½	7	7 ½	8	8 ½	9	9 ½	10	10 ½	11	11 ½	12	12 ½	13	13 ½	14	14 ½	15	15 ½	16
USL	6 ½	7	7 ½	8	8 ½	9	9 ½														
EU	38	38 ½	39	40	40 ½	41	42	42 ½	43	44	44 ½	45	46	46 ½	47	48	48 ½	49	49 ½	50	51
JAPAN	24	24 ½	25	25 ½	26	26 ½	27	27 ½	28	28 ½	29	29 ½	30	30 ½	31	31 ½	32		32 ½		33



Page	Style no.	Kids style no.	Womens style no	Style name
14	207393	207394	207397	hmiLEAD S/S POLY JERSEY
14	207395	207396	207398	hmiLEAD POLY SHORTS
16	207399	207400		HMLLEAD POLY ZIP JACKET
15	207403	207404	207424	hmiLEAD HALF ZIP
15	210279	210280	211856	hmiLEAD POLY PANTS
16	207413	207414		hmiLEAD FOOTBALL PANTS
17	207409	207410	211857	hmiLEAD POLY HOODIE
17	207415	207416		hmiLEAD TRAINING JACKET
18	207405	207406		hmiLEAD ALL WEATHER JACKET
24	219964	219965	219966	hmiAUTHENTIC PL JERSEY S/S
24	219970	219971	219972	hmiAUTHENTIC PL SHORTS
24	219991			hmiAUTHENTIC FUNCTIONAL POLO
25	219973	219974		hmiAUTHENTIC HALF ZIP SWEAT
26	219994	219995	224785	hmiAUTHENTIC WOVEN SHORTS
27	219976	219977		hmiAUTHENTIC PL HOODIE
27	219982	219983	219984	hmiAUTHENTIC PL ZIP JACKET
28	219988	219989	219990	hmiAUTHENTIC PL PANTS
28	220000			hmiAUTHENTIC ALL WEATHER JACKET
29	219998			hmiAUTHENTIC BENCH JACKET
30	220007		220009	hmiAUTHENTIC CO T-SHIRT S/S
30	220010			hmiAUTHENTIC CO TRAINING SWEAT
36	211943	212644	211944	hmiCORE XK SS POLY TEE
36	211455	211456	211457	hmiCORE XK POLY JERSEY SS
37	211461	211462		hmiCORE XK POLY JERSEY L/S
37	211466	211467	211468	hmiCORE XK POLY SHORTS
37	211469	212647		hmiCORE XK POLY COACH SHORTS
38	211463	211942		hmiCORE XK FUNCTIONAL POLO
38	211479	211480	211945	hmiCORE XK HALF ZIP POLY SWEAT
38	211481	212652	212653	hmiCORE XK POLY ZIP SWEAT
39	211482	211483	212649	hmiCORE XK POLY SWEAT HOODIE
40	211475	212655	212656	hmiCORE XK POLY PANT
42	211486	211487		hmiCORE XK SPRAY JACKET
42	211488	212657		hmiCORE XK BENCH JACKET
44	211458	212642		hmiCORE XK STRIPED JERSEY S/S
44	211459	215003		hmiCORE XK SUBLIMATION JERSEY S/S
52	224541	224542	227349	hmiESSENTIAL JERSEY S/S
52	224543	224544	227350	hmiESSENTIAL SHORTS
53	224639	224640		hmiESSENTIAL SWEATSHIRT
54	224549	224550		hmiESSENTIAL TRAINING PANTS
55	224547	224548		hmiESSENTIAL TRACK JACKET
55	224554	224555		hmiESSENTIAL SHORT BENCH JACKET
82	220291		220293	hmiTRAVEL T-SHIRT S/S
82	220438		220440	hmiTRAVEL POLO

Page	Style no.	Kids style no.	Womens style no	Style name
82	220309		220311	hmiTRAVEL SHORTS
83	220294		220296	hmiTRAVEL SWEAT HOODIE
90	214792	214914	214793	hmiMOVE GRID COTTON T-SHIRT S/S
91	214783	214909	214787	hmiMOVE GRID COTTON HOODIE
98	224828	224829	224830	hmiGO 2.0 T-SHIRT S/S
98	224831		224832	hmiGO 2.0 POLO
99	224835	224836		hmiGO 2.0 SWEATSHIRT
99	224833	224834	225250	hmiGO 2.0 HOODIE
99	224837	224838	224839	hmiGO 2.0 ZIP HOODIE
102	221008		221010	hmiGO FLEECE JACKET
102	221001	221002	221003	hmiGO QUILTED HOOD JACKET
102	221017			hmiGO PARKA JACKET
122	4087	104087		ESSENTIAL GK JERSEY
122	205280	205281		CORE GK SET
144	204046			ELEMENT FOOTBALL SOCK
145	203404			ELEMENT FOOTBALL SOCK FOOTLESS
150	207141			CORE TEAM BAG
151	205888			CORE BALL BACK PACK
152	202613			TEAM TROLLEY
158	224971			hmiSHIN GUARDS HARD SHELL
158	224972			hmiSHIN GUARDS FLEX SHELL
158	224973			hmiSHIN GUARDS SUPER LIGHT
159	224974			hmiSHIN GUARDS HYPER FIT
162	224975			hmiGK GLOVES CORE GRIP
162	224976			hmiGK GLOVES ALLROUND GRIP
162	224977			hmiGK GLOVES SUPER GRIP
163	225307			hmiGK GLOVES MEGA GRIP
163	224978			hmiGK GLOVES HYPER GRIP
164	208916			HUMMEL TRAINING BEANIE
164	208914			HUMMEL TRAINING HAT
168	98153			3-PACK HEADBAND 17-18
169	5002	105002		FUNDAMENTAL TRAINIG BIB
169	99164			OLD SCHOOL CAPTAINS BAND
176	224987			hmiPRECISION MATCH
176	224985			hmiPRECISION TRAINING PRO
176	224983			hmiPRECISION TRAINING
177	224989			hmiPRECISION FUTSAL
178	224988			hmiAEROFLY MATCH
178	224986			hmiAEROFLY TRAINING PRO
178	224984			hmiAEROFLY TRAINING
180	224990			hmiPRECISION MINI
180	225573			hmiESSENTIAL BALL NET
180	225572			hmiCORE BALL BAG



TEAMSPORT

FROM CRADLE TO CRADLE

A SUSTAINABLE SPORT CATALOGUE

This Sport Catalogue is a cradle-to-cradle certified product.

This means that you turn the pages of a guaranteed sustainably printed product, which is 100% biologically decomposable and completely free of any toxic chemicals and heavy metals. It also means that in producing this catalogue, we have reused the earth's resources in a natural circular process, leaving no harmful waste materials, which are dangerous to people or the environment. In other words, you could bury this catalogue in your garden and even plant

vegetables on top without damaging the environment or your health!

The Cradle-to-Cradle certification is a holistic environmental certification which guarantees that a product does not pollute or eat into the earth's limited resources but enters nature's own circuit. In line with our Company Karma philosophy, we encourage these new environmentally responsible and circular processes, securing a healthy world for future generations, from cradle to cradle.